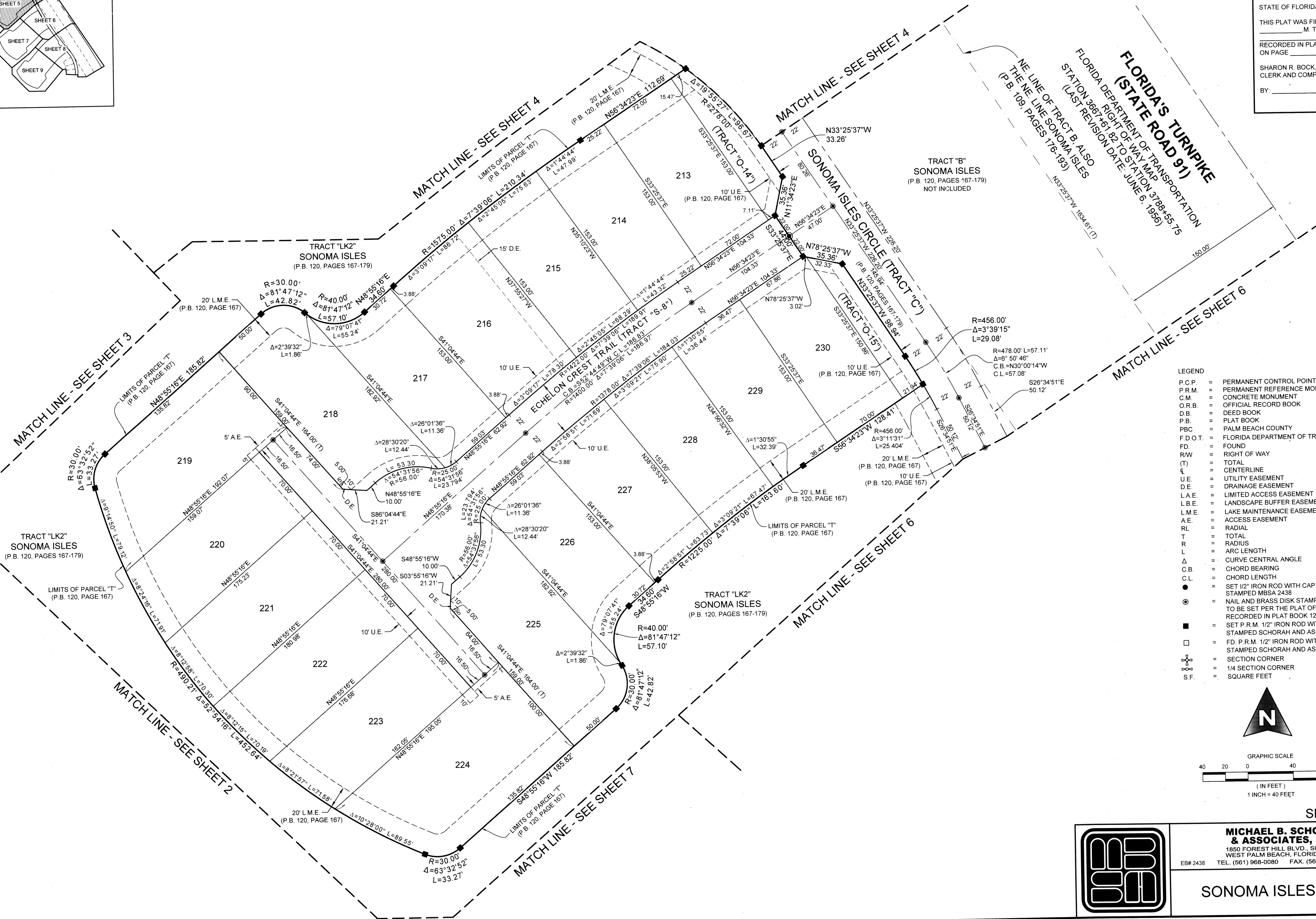
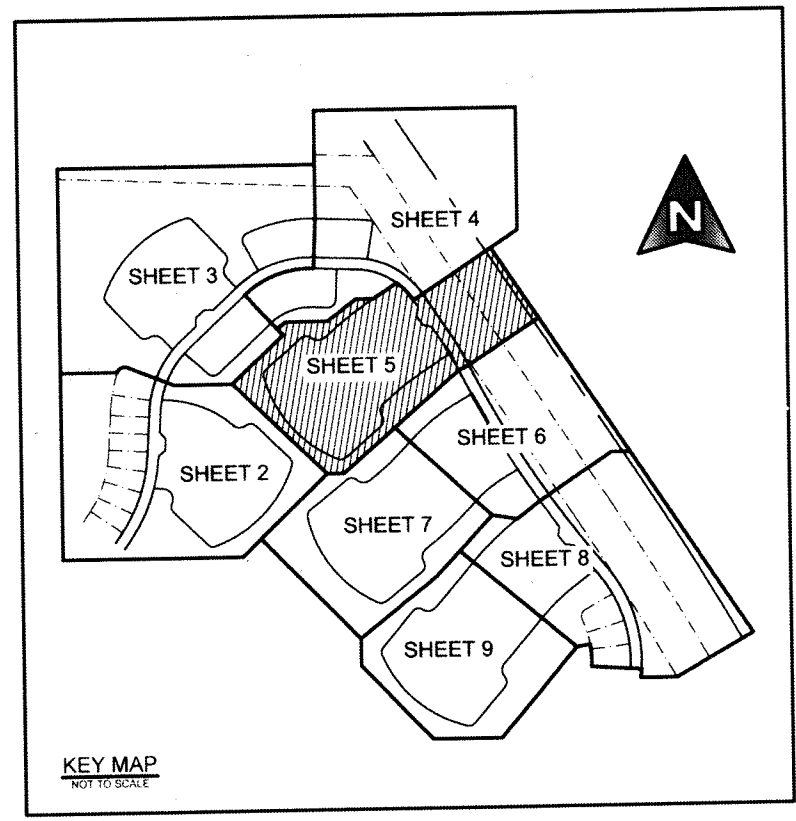


SONOMA ISLES PLAT 4

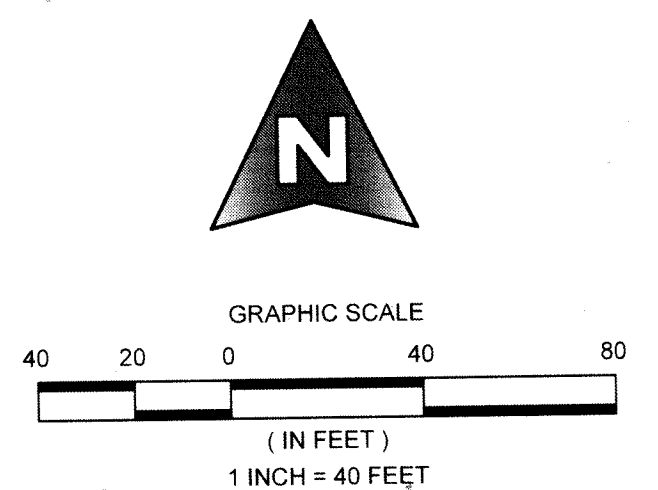
LYING IN SECTION 32, TOWNSHIP 40 SOUTH, RANGE 42 EAST AND SECTION 5, TOWNSHIP 41 SOUTH, RANGE 42 EAST, TOWN OF JUPITER, PALM BEACH COUNTY, FLORIDA, BEING A RE-PLAT OF PARCELS "R", "S-1", "S-2", "S-3", "T", "U" AND "V", PLAT OF SONOMA ISLES, AS RECORDED IN PLAT BOOK 120, PAGES 167 THROUGH 179, INCLUSIVE, PUBLIC RECORDS OF PALM BEACH COUNTY, FLORIDA
SHEET 5 OF 9 MARCH, 2017

29

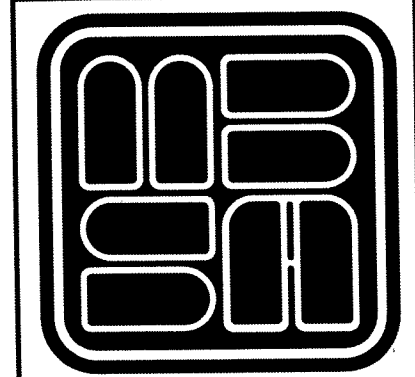
COUNTY OF PALM BEACH)
STATE OF FLORIDA) SS
THIS PLAT WAS FILED FOR RECORD AT)
M. THIS) DAY OF)
RECORDED IN PLAT BOOK NO.)
ON PAGE) THRU)
SHARON R. BOCK,
CLERK AND COMPTROLLER
BY: _____ D.C.



- LEGEND**
- P.C.P. = PERMANENT CONTROL POINT
 - P.R.M. = PERMANENT REFERENCE MONUMENT
 - C.M. = CONCRETE MONUMENT
 - O.R.B. = OFFICIAL RECORD BOOK
 - D.B. = DEED BOOK
 - P.B. = PLAT BOOK
 - P.B.C. = PALM BEACH COUNTY
 - F.D.O.T. = FLORIDA DEPARTMENT OF TRANSPORTATION
 - FD. = FOUND
 - R/W. = RIGHT OF WAY
 - (T) = TOTAL
 - C. = CENTERLINE
 - U.E. = UTILITY EASEMENT
 - D.E. = DRAINAGE EASEMENT
 - L.A.E. = LIMITED ACCESS EASEMENT
 - L.B.E. = LANDSCAPE BUFFER EASEMENT
 - L.M.E. = LAKE MAINTENANCE EASEMENT
 - A.E. = ACCESS EASEMENT
 - RL = RADIAL
 - T = TOTAL
 - R = RADIUS
 - L = ARC LENGTH
 - Δ = CURVE CENTRAL ANGLE
 - C.B. = CHORD BEARING
 - C.L. = CHORD LENGTH
 - = SET 1/2" IRON ROD WITH CAP
 - ⊙ = NAIL AND BRASS DISK STAMPED P.C.P. LB 2438 TO BE SET PER THE PLAT OF SONOMA ISLES AS RECORDED IN PLAT BOOK 120, PAGES 167-179
 - = SET P.R.M. 1/2" IRON ROD WITH ALUMINUM DISK STAMPED SCHORAH AND ASSOCIATES PRM LB#2438
 - = FD. P.R.M. 1/2" IRON ROD WITH ALUMINUM DISK STAMPED SCHORAH AND ASSOCIATES PRM LB#2438
 - ⊕ = SECTION CORNER
 - 1/4" = 1/4 SECTION CORNER
 - S.F. = SQUARE FEET



SHEET 5 OF 9
MICHAEL B. SCHORAH & ASSOCIATES, INC.
1850 FOREST HILL BLVD., SUITE 206
WEST PALM BEACH, FLORIDA 33406
EB# 2438 TEL. (561) 968-0080 FAX. (561) 642-9726 LB# 2438



SONOMA ISLES PLAT 4

© 2017 Project: 1641A SONOMA ISLES 1647 SONOMA PLAT 4.dwg: 03/20/17 2:17:29 PM: 1/06